



# CDSOA Shakedown Cruise

## South River

April 30-May 1, 2011

**PLEASE REGISTER BY "APRIL 29"!**

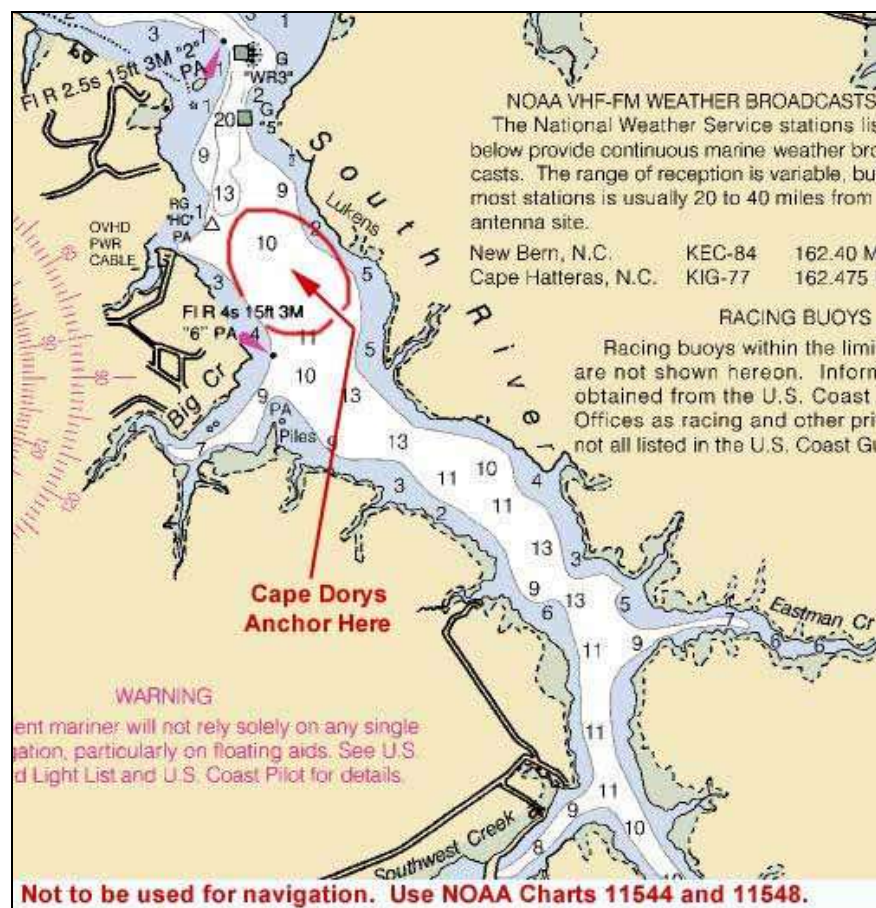
Questions? Contact Event Organizer **Kurt Weinheimer** Ph: 252-638-4743; wkurtsails@embarqmail.com

Our first cruise of the season will be a Shakedown Cruise to South River. Those boats departing on Saturday the 29<sup>th</sup> should plan on a 1200 hour rendezvous at Oriental #1. Take a heading of 102 degrees for South River #1 for approximately 4 nm leaving Garbacon Shoals marker # 7 to starboard. Change to a heading of 163 degrees for 1.6 nm to South River entrance marker #1 which is located at 34 59.4 N, 076 35.4W. Follow carefully the markers for SR while passing through the narrow entrance channel. Weather permitting; our anchorage location will be on the east shore of South River opposite SR # 6.

**Fleet communications will be on VHF Ch. 16 and 72.**

**Please monitor these channels during the cruise.**

**Hail the "Cape Dory Fleet" or individual boats.**



If there is a need for better protection from the wind or weather we will travel farther up South River and anchor in Southwest Creek. SW Creek is approximately 1.5 nm from our first anchorage and

located on the west side of the river and still carries 8 to 9 feet of water. The entrance to Southwest Creek is 34 55.1N, 076 32.9W.

Raft up, cocktails and snacks will be on *Ardea* at 1600 hours and dinner is up to each individual boat.

Departure for the return trip to Oriental on Sunday is up to each captain. As always these directions are to assist with your cruise planning but the route taken is ultimately the captain's responsibility.

---

***All owners of both Cape Dory and Robinhood power and sailboats, CDSOA members and non-members, are welcome to attend.***

**All captains are responsible for their own navigation and the safety of their vessels and crew.**

**Use NOAA Charts 11544 and 11548.**

---