



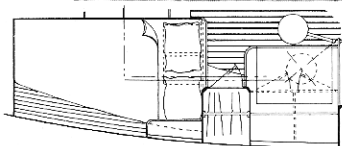
CAPE DORY

L.O.D. 40'2"
L.W.L. 30'0"

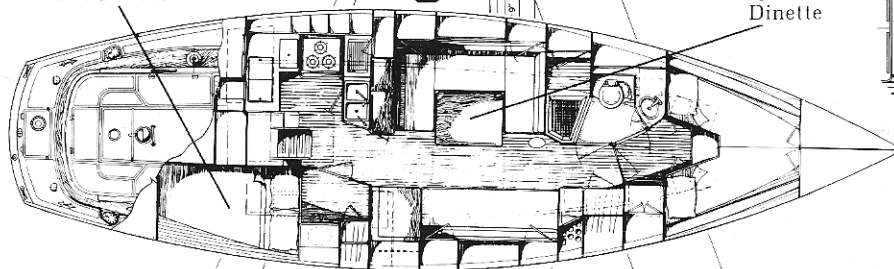
40 Beam 11'8"
Draft 5'8"

Displacement 19,500 lbs.
Ballast 7,600 lbs.

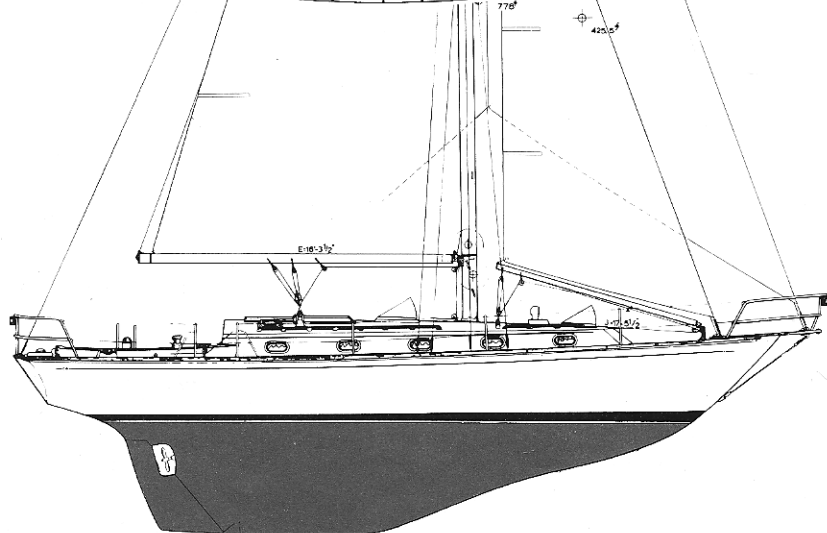
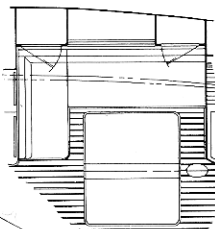
Sail Area, Cutter 776 sq. ft.
Mast above WL 53'6"
Designer Carl Alberg



Optional
Aft Stateroom



Optional
Dinette



The Cape Dory 40 is Carl Alberg's latest "full-keel" design. The Cape Dory 40 offers uncompromised quality and blue water confidence plus a well engineered interior for cruising sailors. The easy motion of her hull shape along with her versatile cutter rig with boomed stay-sail enables the large boat to be singlehanded or sailed with a small crew. The interior is thoughtfully and meticulously crafted and includes a roomy V-berth with an abundance of drawers and lockers, a large head with separate shower stall, U-shaped dinette that converts to a double berth, an efficient navigation station, and well-planned aft galley.

Cruising sailors looking for an easily handled, well built, blue water yacht with a long list of standard equipment should be pleased with the new Cape Dory 40.

Cape Dory Yachts...a standard of value

**CAPE
DORY
YACHTS**

